

**RoboMAX** 75HP



**ENERGREEN**<sup>®</sup> *America*  
Professional Machines



# REMOTE CONTROLLED TOOL CARRIER

**55°** SLOPE



**REMOTE CONTROLLED  
TOOL CARRIER**





# ROBOMAX

*Robo***MAX**  
75HP

## Powerful Remote Controlled Tool Carrier

**RoboMAX** is a powerful remote-controlled tool-carrier that can easily work in different activities and branches. The standard attachment includes two hydraulic double-effect functions.

Designed to satisfy the most different needs, **RoboMAX** can be defined as a **multifunction machine**, with power and performances that can be easily compared to a traditional tractor with several accessories.

The main features that make the difference about this machine among all other robots are: power, reliability, strenghtness, high performances, versatility and a **75 HP** diesel engine.



**WORKING RANGE 492 FT**



# STRENGTHS

**RoboMAX**  
75HP



## STRENGTHS



### Safety and Comfort

- Radio controlled machine
- Operator recommended safety zone
- Emergency button on the remote control
- Excellent maneuverability
- Easy to use and carry



### Working on steep slopes

- Special design of the track
- Excellent traction in all directions up to 55°
- Special oil sump
- Low center of gravity



### Multifunction

- Multiple tools available
- Road and river maintenance
- Vegetation and forestry maintenance
- Agriculture and industry service
- Winter road service



### Productivity

- Engine 75 HP EPA Tier 4f
- Quick change of attachment
- Fast execution of work
- Maneuverability on any surface







OPERATOR  
IN SAFETY  
ZONE

## RoboMAX is Safety

RoboMAX is a remote controlled machine, able to be operated **safely** in **dangerous areas**, with slopes up to **55°** in any direction.

The exceptional stability of the machine is given by a low center of gravity, a special oil sump and rubber or steel tracks for excellent traction.

The **safety of the operator** is one of our goals: the use of the remote control with up to **492 ft** range avoids several work risks to the operator such as noise, vibrations, exposure to exhaust materials, etc.

# REMOTE CONTROLLED

*Robo***MAX**  
75HP

THE **REMOTE CONTROL**  
IS **LIGHTWEIGHT, INTUITIVE,**  
AND **EASY TO MASTER**

EMERGENCY  
BUTTON



492 FT



**RoboMAX**  
75HP

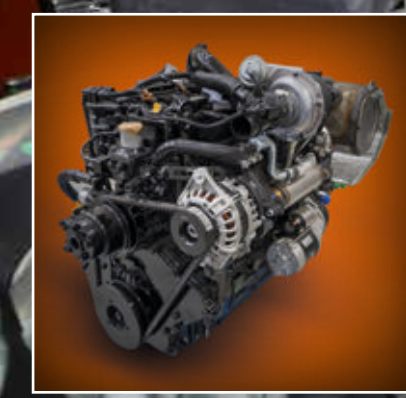


## QUALITY COMPONENTS ✓

RoboMAX is built with an ultra-resistant steel to ensure a long lifetime; all the components are tested and certified to ensure the maximum reliability and safety.

- Engine tested by the producer with a remarkable reputation for reliability.
- Remote-control technology developed by a team of specialized experts.
- Powerful and efficient engine, ideal for steep slopes.
- Engine crankcase designed to ensure the oil, even on steep slopes.
- Double roll bar integrated into the frame to ensure protection of the machine.
- Independent cooling system of the hydraulic system to optimize performances.
- Flat bottom frame to protect the under carriage and prevent the entrance of cutted vegetation to protect all the components.

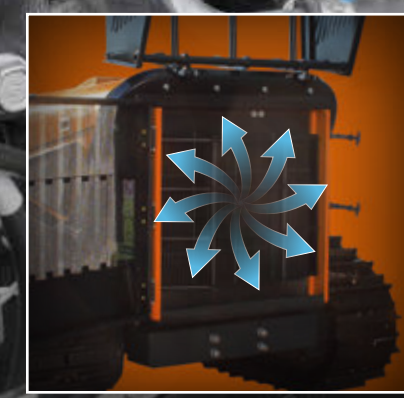
Born to satisfy the most difficult needs, RoboMAX can easily be defined as a remote-controlled grass cutting machine with power and performances comparable to a classic grass cutting arm for a tractor. These main features distinguish this machine from any other robot used for grass cutting: **power, reliability, strength and high efficiency.**



YANMAR ENGINE 75 HP

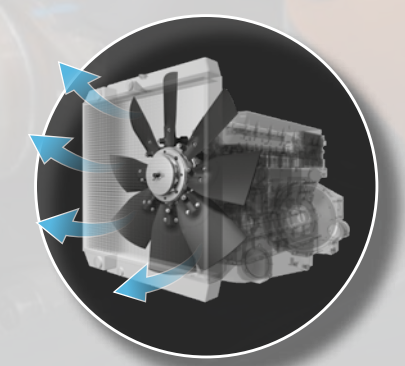


THE BEST COMPONENTS



FREXXAIRE® SELF-CLEANING REVERSIBLE FAN

RoboMAX is equipped with the self-cleaning reversible fan FLEXXAIRE®, to increase productivity and fuel saving.





# WORK ON SLOPES



LOWERED CENTER OF GRAVITY

LOWERED CENTER OF GRAVITY

55°

RoboMAX

## Working on steep slopes up to 55°

The special design of the track and its tensioning system makes RoboMAX a safe machine for working on slopes up to 55° in any direction: hill and mountain areas, slopes, embankments, and in all those places where the adherence is very low and where a machine for high slopes is required.





# MULTIFUNCTION



## The suitable tool for every work

**RoboMAX** is a technologically advanced machine that responds to the current needs of safety and performances required by the market.

**Energreen** wants to change the traditional concept of the grass cutting, creating a remote-controlled machine, that can mow where previously there was only the possibility to use hand brush cutters; this represents a new frontier of use, where the safety of the operator is put first.

**RoboMAX** is certainly faster than the traditional way of mowing; it allows to optimize the work in the most different working environments.





# ATTACHMENTS



**RoboMAX**  
75 HP



## HEAD 180

### GRASS HEAD

Strong and reliable grass head, with a frame made of high resistance Strenx® steel, wear-proof and shock-proof. The head is the ideal solution to cut grass and shrubs up to a diameter of 1.18". It can be equipped with a Y flails rotor with adjustable height of cut.

#### TECHNICAL DATA

Working width	69 in
Maximum width	80 in
Cutting diameter	1.18 in
Speed rotor	2300 rpm
No. of flails	72
Weight	1058 lbs



## FORESTRY 150 H

### FORESTRY HEAD WITH SWINGING HAMMERS

Strong and reliable forestry head, with a frame made of high resistance Strenx® steel, wear-proof and shock-proof. It is the ideal solution to cut grass and shrubs up to a diameter of 3.15". It is equipped with a rotor with swinging hammers.

#### TECHNICAL DATA

Working width	59 in
Maximum width	71 in
Cutting diameter	3.15 in
Speed rotor	2200 rpm
No. of hammer	20
Weight	1796 lbs



## FORESTRY 150 T

### FORESTRY HEAD WITH FIXED TEETH

Strong and reliable forestry head, with a frame made of high resistance Strenx® steel, wear-proof and shock-proof. It is the ideal solution to cut grass and shrubs up to a diameter of 4.72". It is equipped with a rotor with fixed teeth.

#### TECHNICAL DATA

Working width	58 in
Maximum width	71 in
Cutting diameter	4.72 in
Speed rotor	2200 rpm
No. of teeth	42
Weight	1796 lbs

Technical and construction specifications may be subject to change without prior notice

# ATTACHMENTS





## BUCKET

### TIPPING BUCKET HIGH

Robust tool, essential for the loading and handling of materials in narrow or dangerous environments. The use of two hydraulic cylinders ensure the unloading of the product at a height of 28 in.

#### TECHNICAL DATA

Working width	65 in
Max. tipping height	28 in
Load that can be lifted	1985 lbs
Bucket volume	10.59 ft³
Pressure	2610 PSI
Weight	595 lbs



## PRUNER DISCS

### DUAL BLADE HEDGE TRIMMER

This tool is suitable for pruning vineyards, olive trees, hedges, or trees in general. It can reach a cutting length of 130". The cutting disks are made of stainless steel to ensure a long lifetime.

#### TECHNICAL DATA

No. flails	5 + 3
Vertical cut	79 in
Horizontal cut	51 in
Flails diameter	16 in
Extension height	27 in
Horizontal extension	27 in
Weight	750 lbs



## SPRAYER EG400

This sprayer is useful for antiparasitic or fungicide treatments to avoid diseases and molds. It can be equipped with the weeding bar and a reel with handgun.

#### TECHNICAL DATA

Capacity	105 gal
Fan	23 in
Power	20 HP
Flow	25 gal/min
Air volume	925244 ft³/h
Weight	1543 lbs



## BIO-SHREDDER

Powerful chipper designed to shred group of branches, trunks, or vegetal waste with a diameter up to 4". The chopped material can be ejected directly on the soil or collected for the transport.

#### TECHNICAL DATA

Max. cross-section	4 in
Output	353 sq ft/h
Hopper opening	9 x 12 in
No. blades / hammers	2 / 20
Power	20 HP
Weight	1014 lbs



## STONE CRUSHERS

Stone crusher ideal to use in orchards or vineyards, and for roadwork. It can also be used to create firebreak trenches in the woods, destroy stumps, make trekking routes, level ski slopes, golf courses, etc.

#### TECHNICAL DATA

Rotor width	17 in
No. hammer	4
Pressure	4206 PSI
Hydraulic drive with piston	
Belt transmission	
Weight	1031 lbs



## WINCH

Rear hydraulic winch, useful for towing the machine in case of need. Has a towing capacity of 3086 lbs, which added to the power of the machine increases its strength to ensure maximum reliability.

#### TECHNICAL DATA

Pulling force	3086 lbs
Hydraulic flow	5 gal/min
Length of drum rope	105 ft
Rope diameter	0.3 in
Towing pressure	2610 PSI
Weight (complete with support)	397 lbs

\* Complete with support, ballasts excluding

Technical and construction specifications may be subject to change without prior notice





## FORESTRY WINCH

Professional forestry winch, it's the ideal attachments for moving trunks and plants on steep slopes or in narrow areas.

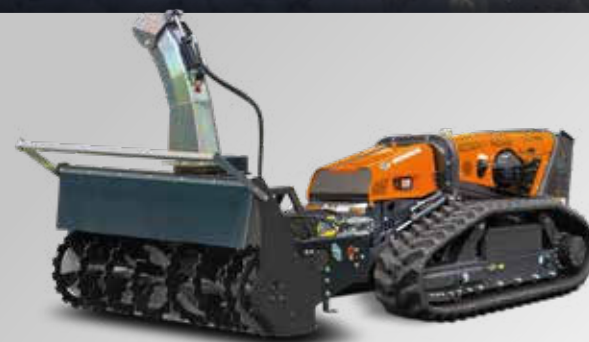
COMING SOON



## STUMP GRINDER

With an oscillating arch movement, this powerful stump grinder can trill an entire stump or trunk. In this way it is possible to renovate areas as a garden or a field even on slopes.

COMING SOON



## SNOW BLOWER

Blower designed to remove the snow, both soft and frozen, from roads, sidewalks, squares, car parks, ramps, and narrow or hardly accessible places. It is equipped with a deflector for an adjustable ejection.

COMING SOON

## OPTIONAL

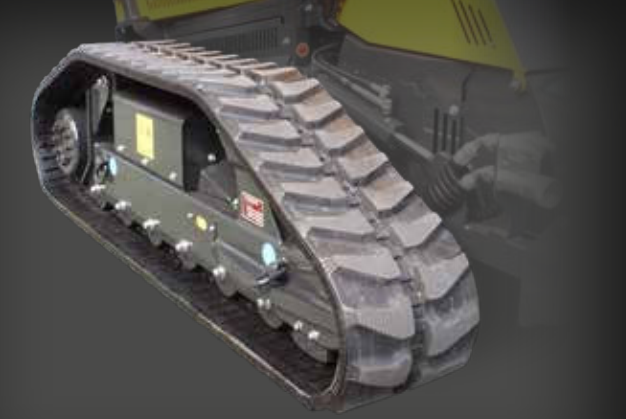


## Strong Radiator Protection

**RoboMAX** can be equipped with a rear steel protection for the radiator (optional). It is a solid structure made up of metal tubes and plates designed to limit damages in case of collision. The structure is handy and easy to open, making everyday maintenance much easier, thanks also to the possibility of lifting it and have an easy access to the radiator.







OPTION **A**

## RUBBER TRACKS

### IDEAL TRACKS FOR DELICATE SURFACES

- 14" of width
- Excellent adherence to the ground
- Work on sloping areas up to 40°



OPTION **B**

## SUPER RUBBER TRACKS

### IDEAL TRACKS FOR FORESTRY WORKS OR AREAS WITH DENSE VEGETATION

- 14" of width
- Wide supporting surface with consequent less weight per sq inch
- Work on sloping areas up to 55°



OPTION **C**

## STEEL TRACKS

### IDEAL TRACKS FOR ROCKY OR WET SURFACES

- 12" of width
- Excellent adherence to the ground
- Work on sloping areas up to 55°



Cogwheel of the tracks in tempered steel



Adaptor with hydraulic motor



Track tensioner with safety spring





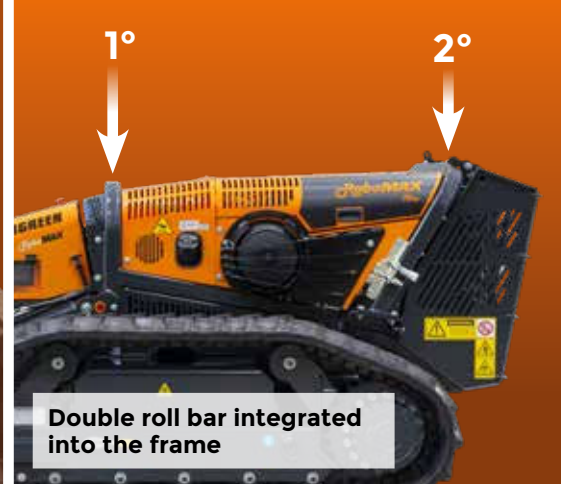
Command board with 4.3" color display



Anti-theft fuel cap



Reversible fan FLEXXAIRE®



Double roll bar integrated into the frame



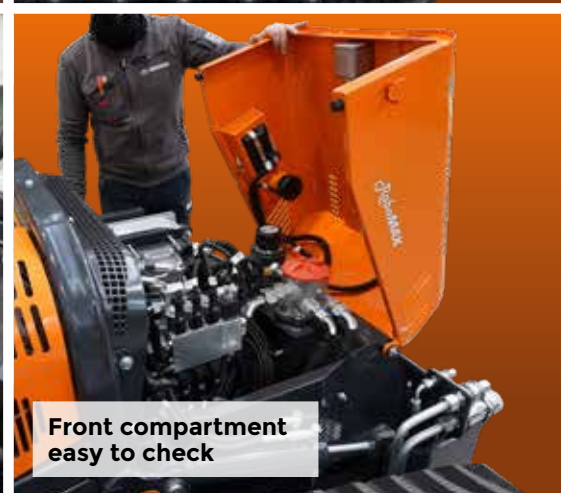
Yanmar engine 75 HP EPA Tier 4f



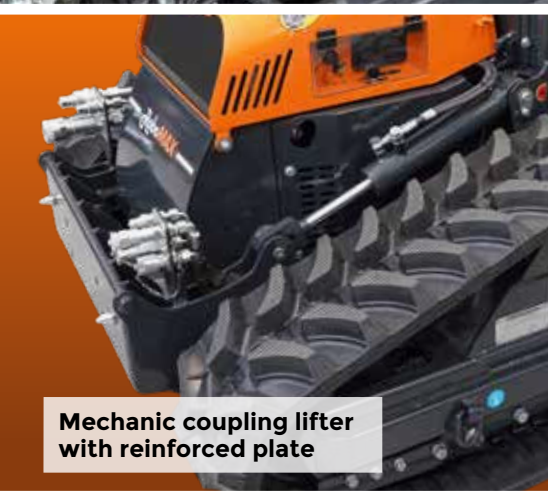
Engine compartment easy to check



Air filter easy to check



Front compartment easy to check



Mechanic coupling lifter with reinforced plate



Quick hydraulic couplings



Steel air filter protection



Led lights

# TECHNICAL DATA



## RoboMAX

Maximum gradient	55°
Transmission	Hydrostatic
Low range speed	0 - 1.55 mph
High range speed	0 - 3.40 mph
Machine weight without attachment	5445* / 5820** lbs

\* Super rubber tracks \*\* Steel tracks

## ENGINE

Brand	Yanmar
Type	4 Cylinders Diesel
Power	75 HP (55 kW) - EPA Tier 4f
Fuel tank capacity	16 gal
Working RPM	2500 rpm

## REMOTE CONTROL

Brand	Autec
Radio frequency	915 Mhz
Working range	492 ft
Joystick	Proportional
Battery (Li-Ion)	Rechargeable

## REMOTE CONTROL CASE standard



Technical and construction specifications may be subject to change without prior notice.





*Robo***MAX**

f y i in **ENERGREENAMERICA.COM**



# REMOTE CONTROLLED TOOL CARRIER



ENERGREEN America • 227 Trade Ct. • Aiken • SC 29805 • USA  
Phone 470 989 2600 • [info@energgreenamerica.com](mailto:info@energgreenamerica.com)  
[www.energgreenamerica.com](http://www.energgreenamerica.com)

Local dealership

PROFESSIONAL MACHINES AND ATTACHMENTS

