

ALPHETTA

143HP



DRIVE
THE CHANGE



ENERGREEN[®] America
Professional Machines



ALPHETTA



DRIVE THE
CHANGE
ENERGREEN®

DRIVE THE CHANGE

Not merely a machine manufacturer: **Energreen** is a pioneer of change in the green and landscape maintenance sector. Our innovative solutions have been transforming the way professionals work along roads, highways, drainage areas and waterways, improving safety, efficiency and sustainability for years.

Our ability to listen carefully to our customers' needs and to respond with immediate solutions, designed with the utmost care and professionalism, results in this continuous development.

A constant commitment to technological evolution enables us to offer machines that not only meet today's needs but anticipate tomorrow's as well.

Drive the change with the help of **Energreen**.

Choose the best for you.

ALPHETTA

No compromise on innovation and performance

Alphetta is ideal for cutting grass along roads and highways, being a perfect combination of agility, versatility and productivity.

Its new **super panoramic, rotating and suspended cabin** offers unrivalled visibility for safe and efficient operation.

The machine **can work in combination** with a cutting arm and a front tool, thus allowing time and results to be optimized.

The speed-shift gearbox ensures agile and quick movements, and its stability, while working and moving, makes it a reliable machine anywhere.

Alphetta is designed to meet all field requirements and is available in two versions, with T6.5 and T5.2 telescopic arms.

ALPHETTA



**BORN TO UPGRADE
ROADSIDE GREEN MAINTENANCE!**

FEATURES

1

STABILITY

Alphetta is the first machine with working arm pivoted to the left of the centreline. This offers and guarantees unrivalled and extraordinary stability, both while working and moving.

2

COMBINED WORKING

Alphetta's innovative design allows it to work in combination with telescopic arm and front tool, cutting large areas in a single pass, for optimised operating time and costs.

3

NEW SPEED-SHIFT GEARBOX

The speed-shift gearbox makes movements uniform and fast, going from 0 to 25 MPH smoothly and progressively.

4

NEW SUSPENDED AND ERGONOMIC CABIN

Alphetta's new suspended cabin is designed for ultimate operator comfort. The ergonomic workplace and intuitive controls reduce fatigue and improve performance.

5

ROTATING CABIN AND PANORAMIC WINDOWS

Alphetta presents a new panoramic, rotating and suspended cabin with 360° visibility, for ultimate control and comfort of the operator whenever working.

6

AGILITY AND COMPACT

Alphetta is compact and maneuverable and offers superior agility with a turning radius of only 14 ft, ensuring quick and safe movement even in complex spaces.

FEATURES



STABILITY

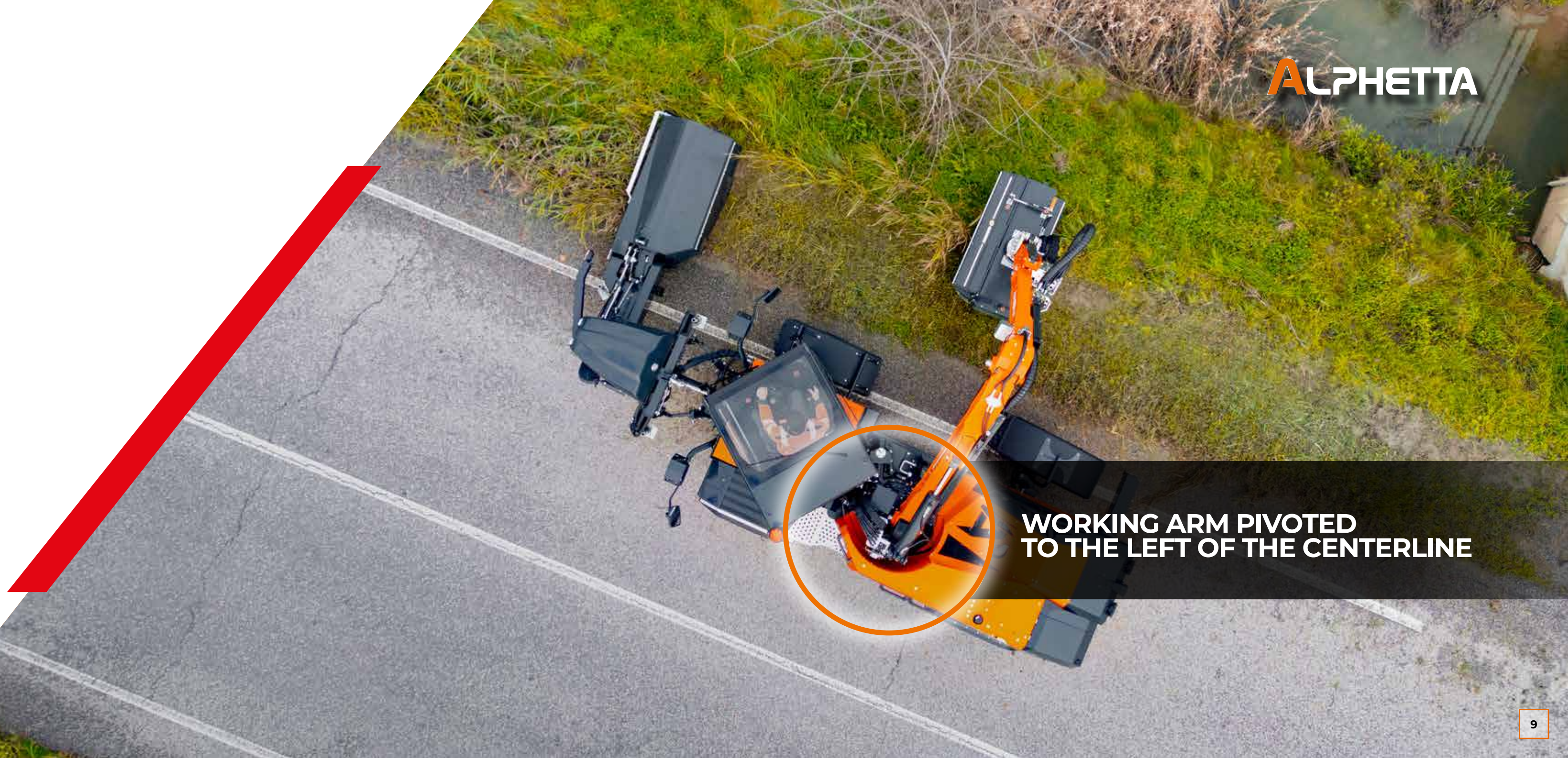
ALPHETTA

Unsurpassed stability

The engineering design that **Energreen** has dedicated to this vehicle is noteworthy and provides ultimate safety.

Alphetta is the first machine with working arm pivoted to the left of its centerline, thus offering and guaranteeing unsurpassed and extraordinary stability, both while working and moving.

Alphetta can boast performance and reliability on any ground as its intrinsic characteristics.



**WORKING ARM PIVOTED
TO THE LEFT OF THE CENTERLINE**



ARM T5.2 T6.5

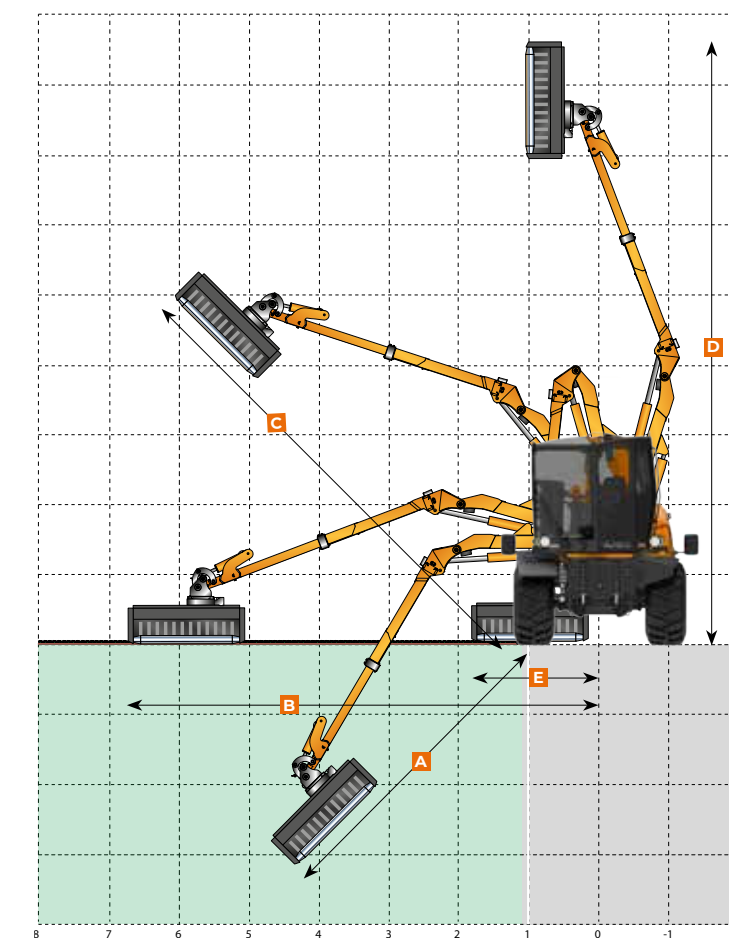


The **T** telescopic arm has been designed to work with an extension up to 22 ft and to reach a maximum height of 28 ft. Its particular geometry enhances the characteristics for road maintenance where you want a combination of mowing roadside and finishing work far from the roadside. The sturdy telescopic extension of the model **T6.5** allows greater work agility and maximum performance even in difficult situations.

Models: **T 5.2** • **T 6.5**

FEATURES

- Telescopic arm up to 22 ft (B).
- Work on medium distances.
- Extended arm but with compact dimensions.
- Cutting of branches in vertical position.
- Versatile use of various tools.



MODELS	A	B	C	D	E
T 5.2	10.79	18.27	19.03	24.48	5.91
T 6.5	14.80	22.08	22.91	28.25	5.91

Dimensions are to be considered with afllail head NEW SPEED 5 ft in the most extreme fixing position.

DOUBLE WORK

ALPHETTA

Designed to change the way of working

Alphetta was designed to redefine roadside green maintenance and created with the idea of working in perfect synergy between its cutting arm and front tool, allowing large areas to be cut in a single pass, for optimized operating time and costs. **Alphetta** guarantees ultimate multiple functions thanks to its option of mounting a DIN plate or 3-point lifter at the front, making it compatible with a wide range of front tools.

This versatility makes **Alphetta** the ideal choice for anyone looking for an agile and flexible machine with uncompromising performance.



SPEED-SHIFT

New speed-shift gearbox

Alphetta's **speed-shift** gearbox makes movements uniform and fast, allowing a smooth and progressive transition from 0 to 25 MPH. Thanks to an electronically controlled synchronizer, the machine manages the gear change intelligently, for easier driving and optimized efficiency. The front axle is equipped with an advanced electronic control unit. It manages the actual gear engagement based on the setting of the pump displacement and of the engine, ensuring that the shift only takes place under optimal conditions, without the need to stop. This system increases productivity, reduces fuel consumption and allows a maximum speed in first gear of up to 10 MPH.

NEW CABIN

New suspended and ergonomic cabin

Alphetta's new suspended cab is a concentration of technology available to the operator according to a highly ergonomic concept.

The cabin suspension system accommodates the operator with unrivaled working comfort. When moving at 25 MPH, ground unevenness and vibrations are absorbed, ensuring smooth and linear travelling.

All main controls are positioned to allow maximum supervision over every movement of the working tools.

The new control armrest is designed for intuitive and safe operation.

The latest generation 7" vertical monitor provides all essential information on the machine operation.



Display LCD ECI
Energreen Control Interface

Rotating cabin and panoramic windows

Total 360° visibility. The large, glazed surfaces combined with the 37° rotation of **Alphetta**'s cabin enhances visibility and control of the working environment, reducing fatigue and operational stress of the driver. The panoramic glazed roof facilitates visibility during aerial arm work.

CABIN



CABIN VERSIONS

	STD	FULL
Rotation cabin (37°)	✓	✓
FOPS-ROPS certified	✓	✓
Monitor ECI 7" + Dash Control	✓	✓
Tilting and adjustable steering column	✓	✓
Electronic direction control lever	✓	✓
DAB stereo	✓	✓
Air conditioning with anti-pollen filter	✓	✓
Left rear mirros	✓	✓
Seat: Grammer Maximo XXL	✓	✗
Seat: Grammer Maximo Evolution Dynamic	✗	✓
LED working lights (3 cabin + arm)	✗	✓
Cruise Control	✗	✓
Fridge	✗	✓
Axle block pedal	✓	✓
Instant reverse pedal	✗	✓
Reversing camera with monitor	✗	✓
Fire extinguisher	✗	✓
Mobile phone holder	✗	✓
Windshield (front, side, on the porthole)	✓	✓
Sunshade (front and on the porthole)	✓	✓
LED working lights	N.1	N.2
Tempered glasses	✓	✓
Emergency glass break hammer	✓	✓
Courtesy lights with ambient light	✓	✓
USB socket (2 dashboard + 1 armrest)	✓	✓
Clothes hangers	✓	✓
Socket 12 V	✓	✓

AGILE AND COMPACT

ALPHETTA

Agile and compact

Alphetta has a compact design and a maximum turning radius of only 14 ft, thus moving with extraordinary agility and greater manoeuvrability than a conventional tractor.

Alphetta is perfect for operating in complicated areas such as those along roads, highways and canals, as it guarantees fast and safe movement in all conditions. Its compact dimensions and optimal stability make it ideal for those looking for a powerful and manoeuvrable machine without compromising on safety.



R 14 ft



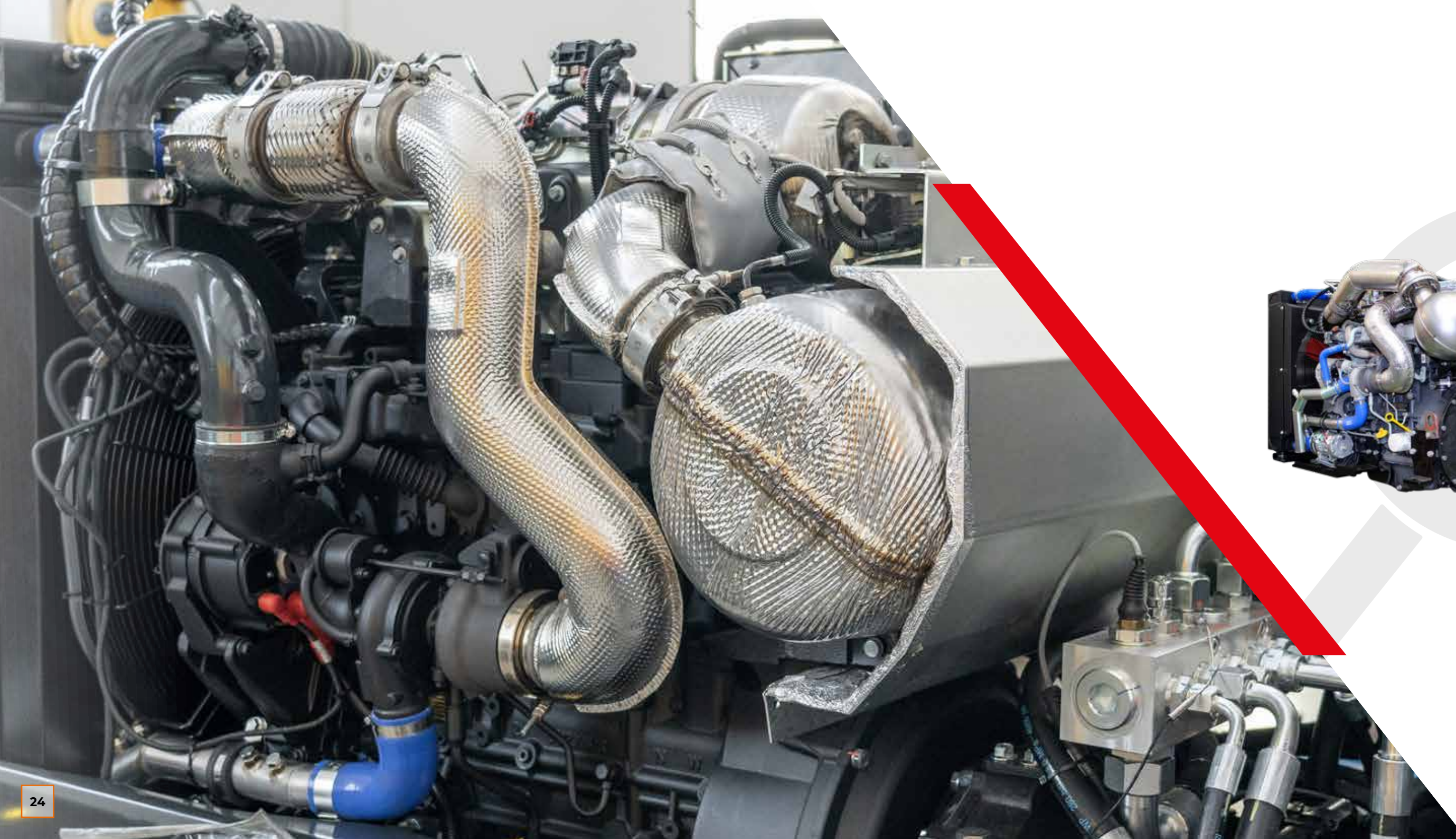
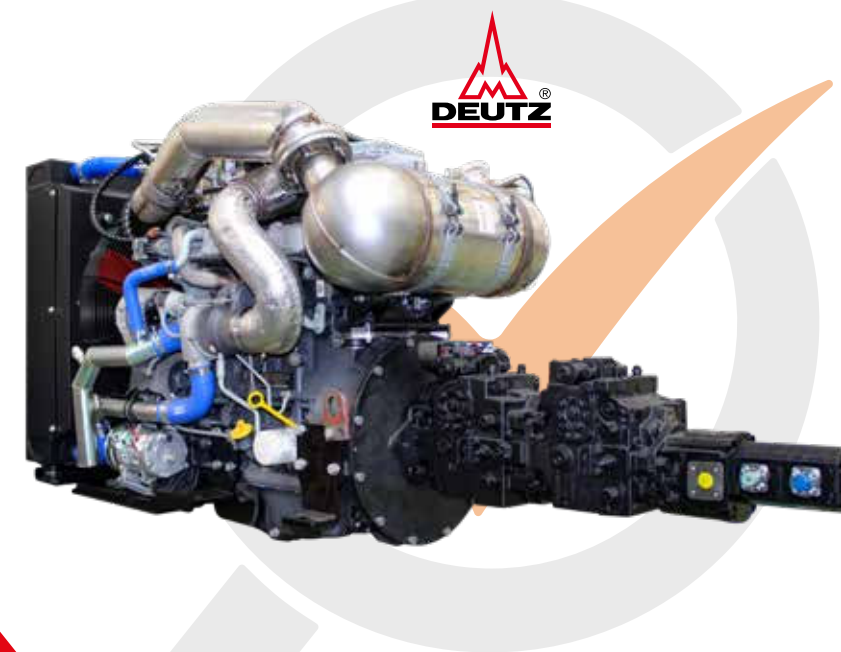
POWER ENGINE

DEUTZ Power Engine

Alphetta is equipped with a **143 cc** (105 kW) 4-cylinder inline engine with liquid-cooled, external exhaust gas recirculation and **EU Stage V** emissions.

The powerful Common Rail injection system at high pressure and the electronic engine control (EMR) with intelligent link to the drive management ensure optimum engine performance at low fuel consumption.

- Minimum consumption of operative liquids compared to competitors.
- Technical support and diagnosis provided by DEUTZ's worldwide service network.





REAR ATTACHMENT

C

B

ARM ATTACHMENT

A

FRONT ATTACHMENT



ATTACHMENTS

THE SUITABLE TOOL FOR EVERY JOB



NEW SPEED
4FT - 5FT
FLAIL HEAD

- Special steel frame.
- Hydraulic opening (optional).
- Adjustable roller.
- Five types of rotors.
- Engine 35 cc (290 bar).
- Cutting diameter 3 in max.



ROTATOR UNIT
ROTATOR UNIT FOR 180° EQUIPMENT ROTATION



BLOWER
REAR BLOWER



NEW SPEED
FLAIL HEAD



FORESTRY HEAD
FORESTRY HEAD WITH FIXED TEETH



SAW BAR
CUTTER DISCS BAR



CUTTER BAR
CUTTER BAR



POWER SHEARS
POWER SHEARS



STUMP GRINDER
STUMP GRINDER



EXTRA TRUNK
PRUNING SCISSORS-PINCERS



ORANGE PEEL GRAPPLE
ORANGE PEEL GRAPPLE



TRUNK PINCERS
TRUNK PINCERS



FORC-ONE
GRASS GRAB



DITCH CLEANER
SHEET DITCH CLEANER



IRON BRUSH
IRON BRUSH TO CLEAN ROADSIDE

DIMENSIONS

TYRES

STANDARD
CONTINENTAL / MITAS
MPT 445/65 R 22,5



ROAD AND OFF-ROAD

OPTIONAL
NOKIAN TRI2
460/65 R24

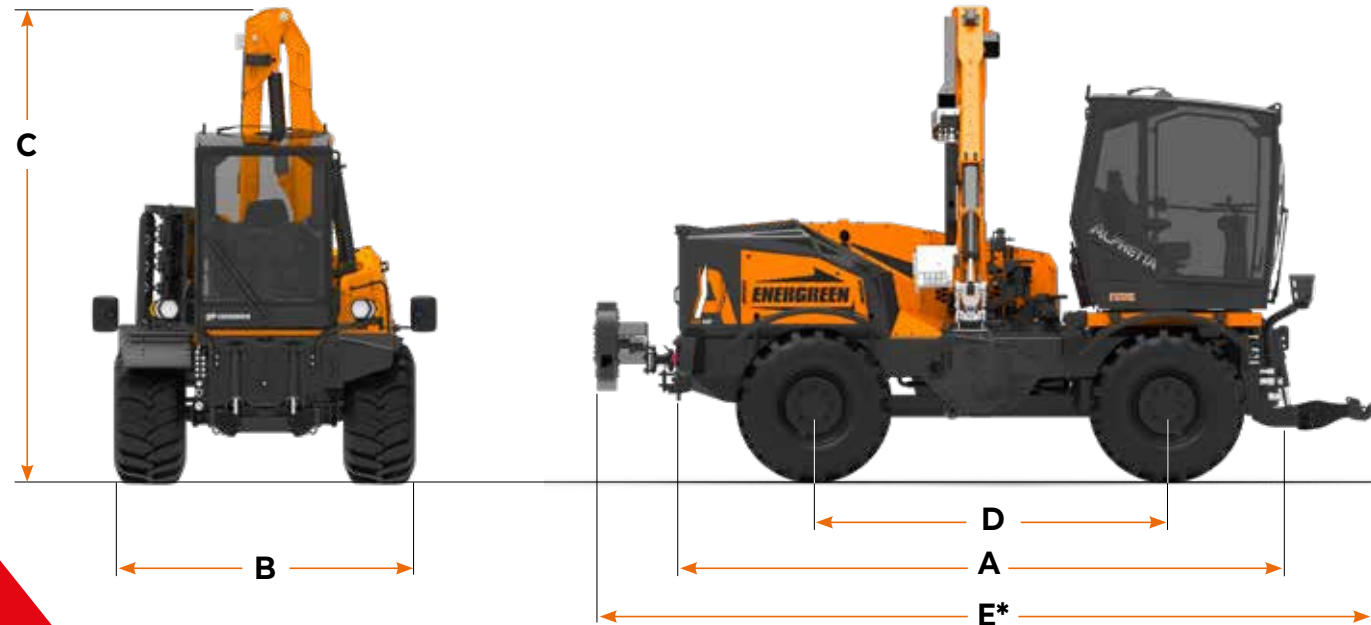


ROAD

OPTIONAL
ALLIANCE 331
600/50 R22.5



OFF-ROAD



DIMENSIONS AND WEIGHT

A Lenght	174 in
B Width	
• Tyres 18 mm	90 in
• Tyres 23 mm	99 in
C Height	156 in
D Wheelbase	104 in
E* Total Length	228 in
Machine weight	17,637 lbs

* The total length of the machine depend on the attachments fitted.

TECHNICAL DATA

CABIN

Cabin	Suspended and rotating up to 37°
Steering wheel	Adjustable
Joystick	Electronic
Air conditioning	Electronic
Rear glass	Darkened anti UV
Cabin door	Completely glass
Adjustable seat	Air suspension
Power socket	12 V
Battery switch	Automatic
Cabin homologation	FOPS-ROPS
Monitor ECI 7" machine control and engine data	
USB socket	

ENGINE

Brand	Deutz TCD 3.6
Type	4 Cylinders Diesel
Power	143 cc (105 kW)
Injection	Common Rail
Exhaust emissions	EU 2016/1628 Stage V
Alternator	120 A.
Fuel tank capacity	46 gal
Reversible self cleaning fan	FLEXXAIRE®
Pre-heating air engine intake	
Air intercooler radiator	
Reinforced cooler radiator	

HYDRAULIC SYSTEM

Pumps and motors in closed circuits	
High flow pump	Piston
Trasmission pump	Piston
Front equipment pump	Piston
Pumps and motors in open circuits	
Arm movements	Gear
Brakes system	Gear
Steering system	Gear
Hydraulic distributor	Proportional
Hydraulic oil	standard: ISOVG H46

TRASMISSION AND BRAKES

Transmission	Hydrostatic
Traction	4x4 (permanent)
4 steering wheels radius	167 in
Tires	Standard: 460/65 R22,5
Speed variation	0 - 25 mph (continuous)
Speedshift Manual gearbox	2 gears
Wheel alignment	Electronic control
Front axle	Fixed
Rear axle	Oscillating
Steering axles	2 steering axles
Axle block	Front 100% - Rear 100%
Parking brake	Negative
Service brakes	6 discs for axle

Caratteristiche tecniche e costruttive soggette a modifica senza obbligo di notifica - Technical and construction specifications may be subject to change without prior notice.

MULTIFUNCTION MACHINE



 **ENERGREEN®**
Professional Machines



ALPHETTA



ALPHETTA

f y i in **ENERGREENAMERICA.COM**



SELF-PROPELLED HYDROSTATIC MACHINES



Local dealership



ENERGREEN America · 227 Trade Ct. · Aiken · SC 29805 · USA
Phone 470 989 2600 · info@energgreenamerica.com
www.energgreenamerica.com

PROFESSIONAL MACHINES AND ATTACHMENTS

