

# BEC

PREVENTATIVE MAINTENANCE

## Pure Vacuum Sweeper

Technical service and support from your local specialists



# Pure Vacuum Sweeper

Our service experts execute critical inspections on a regular basis and conduct thorough walk-arounds and technical analyses of your equipment.

## Preventative maintenance includes:

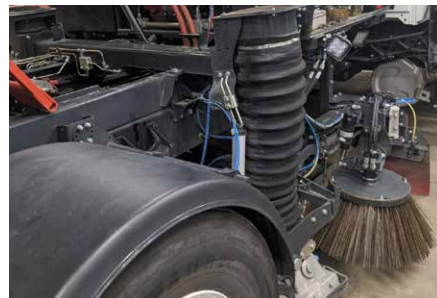
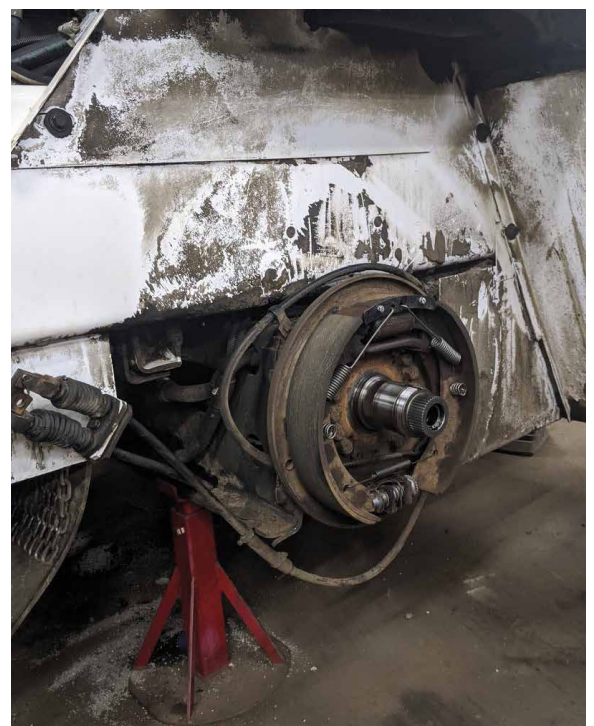
- Thorough pressure wash
- Top-to-bottom inspection
- Complete chassis inspection
- Inspect sweep gear carriage systems
- Complete auxiliary engine service
- Clean and inspect entire water system
- Service hydraulic reservoir
- Check components in debris body
- Inspect fan and fan housing condition
- Change fluid in “z” drive gear box
- Change fluid coupler oil
- Service and inspect catch basin cleaner
- Adjust sweep gear to manufacturer specs
- Sweeping performance test





## Advantages of preventative maintenance:

- Immediate return with operations
- Critical inspections on a regular basis
- Extended sweeper life
- Decline in unexpected breakdowns
- Decrease in parts replacement
- Equipment reliability and availability
- Correcting small problems before equipment failure
- Improved resale value
- Documented maintenance schedule
- Greater safety for workers



EXCEPTIONAL TECHNICAL SERVICE AND SUPPORT LOCALLY LOCATED



**BECC**  
**BROWN**  
EQUIPMENT COMPANY

Serving Indiana, Kentucky, Michigan, and Ohio.

[BrownEquipment.net](http://BrownEquipment.net) | (800) 747-2312

Serving Indiana, Kentucky, Michigan, and Ohio.