

# BECC

PREVENTATIVE MAINTENANCE

# Mechanical Sweeper

Technical service and support from your local specialists

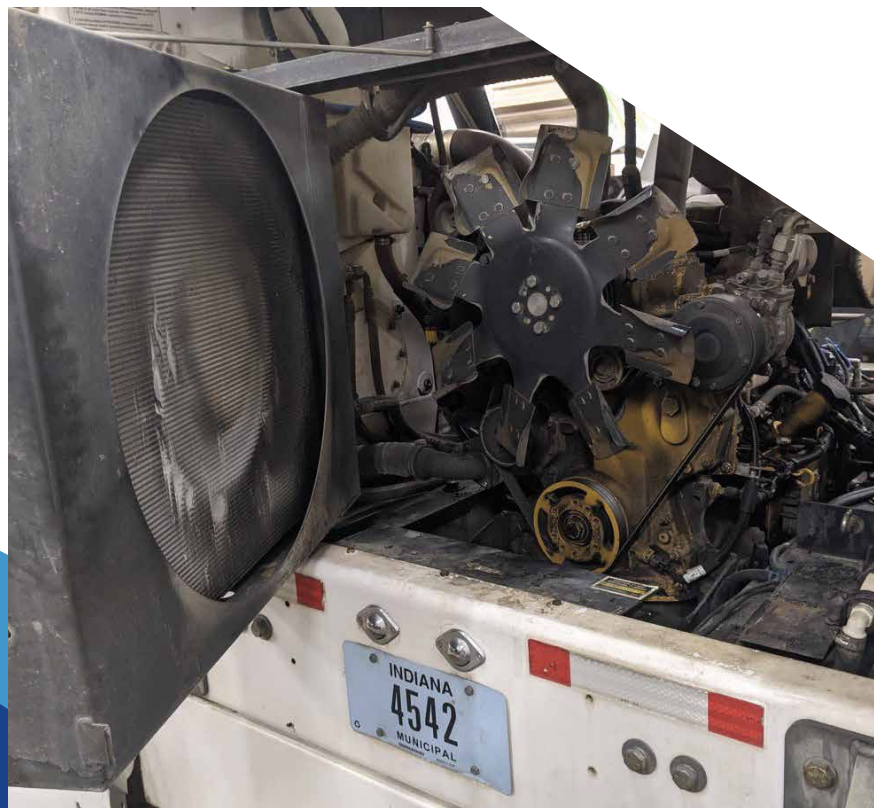


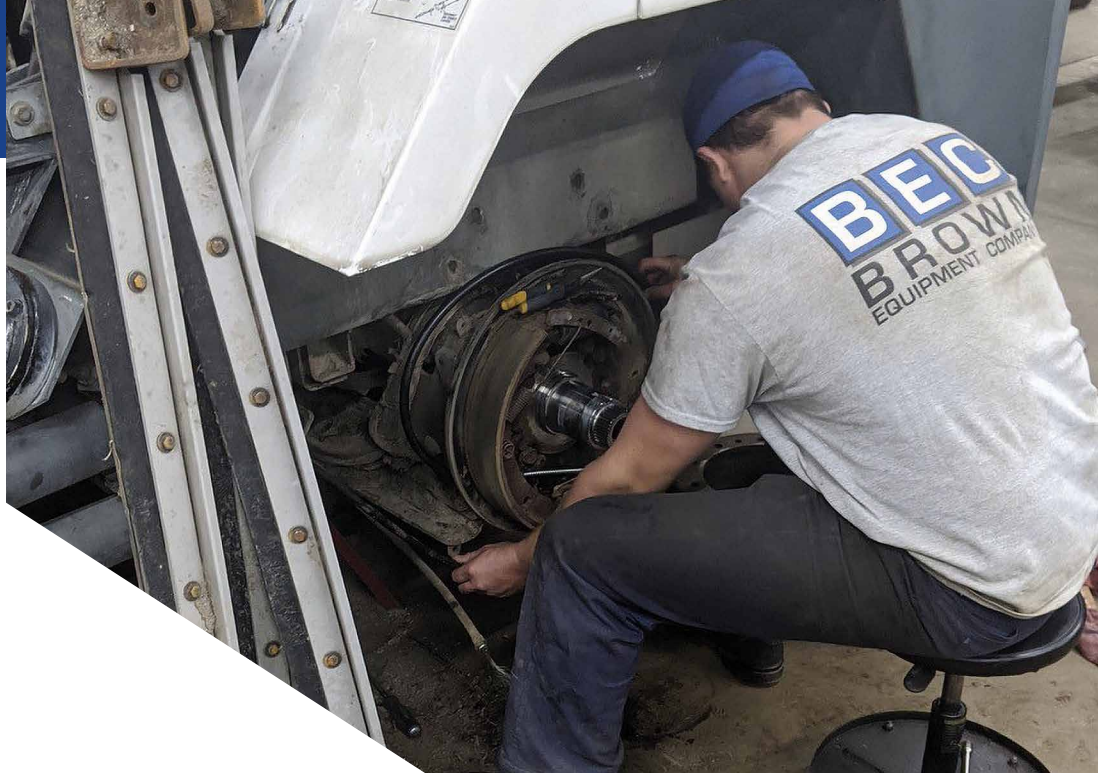
# Mechanical Sweeper

Our service experts execute critical inspections on a regular basis and conduct thorough walk-arounds and technical analyses of your equipment.

## Preventative maintenance includes:

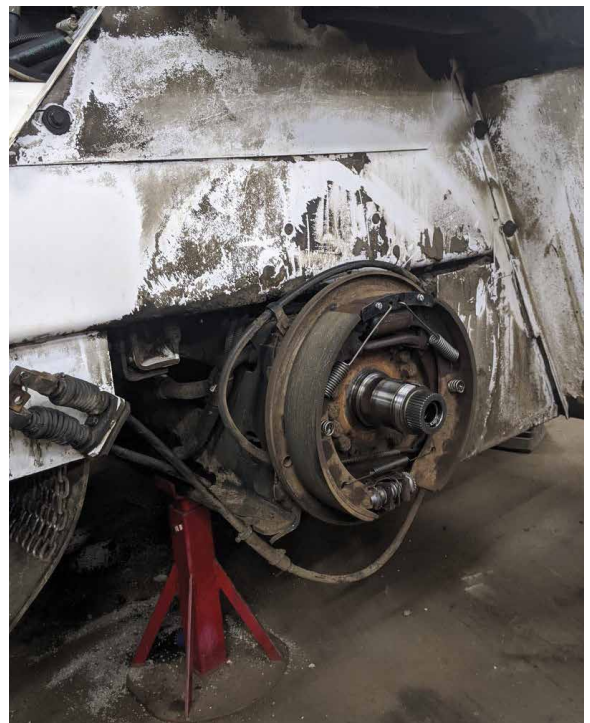
- Thorough pressure wash
- Top-to-bottom inspection
- Hydrostatic traction drive assessment
- Suspension and steering maintenance
- Inspect rear braking assemblies
- Complete body and chassis inspection
- Electrical assessment
- Check all broom operations
- Thorough elevator system inspections
- Check broom lift and lower circuits
- Inspection of all hydraulic lines
- Adjust sweeper back to manufacturer specifications
- Sweeping performance test





## Advantages of preventative maintenance:

- Immediate return with operations
- Critical inspections on a regular basis
- Extended sweeper life
- Decline in unexpected breakdowns
- Decrease in parts replacement
- Equipment reliability and availability
- Correcting small problems before equipment failure
- Improved resale value
- Documented maintenance schedule
- Greater safety for workers



EXCEPTIONAL TECHNICAL SERVICE AND SUPPORT LOCALLY LOCATED



**BECC**  
**BROWN**  
EQUIPMENT COMPANY

Serving Indiana, Kentucky, Michigan, and Ohio.

[BrownEquipment.net](http://BrownEquipment.net) | (800) 747-2312

Serving Indiana, Kentucky, Michigan, and Ohio.